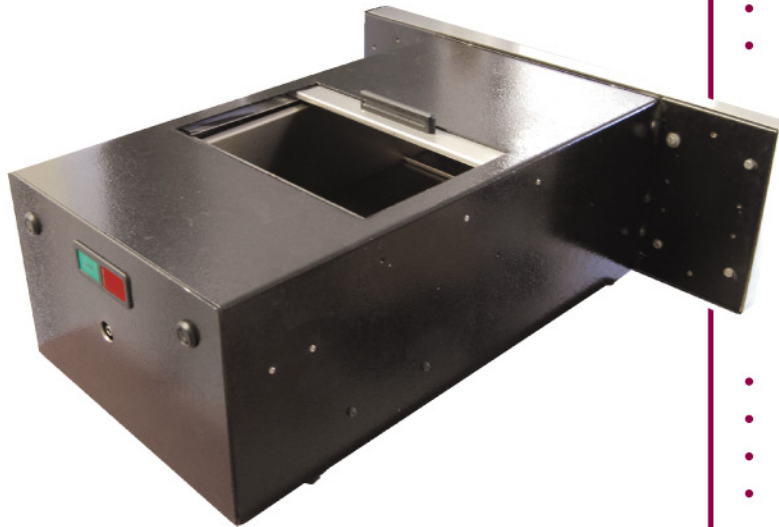


Vault Structures Inc. — Deal Drawer—DD1000



Tel: 800 226 3990



TOP FEATURES

- Bullet Resistant Front
- Electric Operation
- Manual Override Included
- Auto Recall
- Adjustable Travel Limit
- 1208 cu. In Drawer Capacity
- Stainless Steel Outer Finish
- Screw Drive System
- Top Slide At Teller Station
 - Automatic Lock
 - Built-in Speaker, Microphone and Call Button
- Optional Heater
- 1'6" Maximum Extension From Wall (Adjustable)
- Drawer Position At Rest Provides Teller Workspace
- Send Button On Tray
- Provision For BD/Tilt Camera
- Optional LCD Monitor
- 15 Minute Maintenance Program for Serviceability

The REAL DEAL Extended to you!

The deal drawer features a front face that automatically interlocks flush to the base unit which increases safety by defending against first-hand interaction between the teller and customer.

An optional forced-air heater is available to warm the inside of the drawer thus minimizing the cold from conducting into the drawer cabinet. The heater features efficient thermostat control that regulates heat evenly throughout the drawer cavity. It also features quiet operation.

Teller work space is taken into consideration with the sliding teller lid. When the drawer is at rest this non-flip style opening allows for usable counter top space for the operator. The drawer top opening slides shut in order for the drawer to be extended, sealing the drawer from the

potential penetration from the outside. This slide feature helps add space when positioning the drawer in proximity to the window and allows the teller room to work on the counter top when the drawer is not in use.



Made in America

Manufacturer reserves the right to change product specifications without notice.

Safety, Comfort & Functionality

VSI's deal drawer can be retrofitted to replace existing units!

Operation

Easily located switches on the teller and customer side of the unit allows for quick and effortless operation of the drawer. Highly visible red and green push buttons function for calling the unit and sending items through for a smooth transaction. The red call button on the outside of the unit helps to speed up transaction time by alerting the teller to a waiting customer. The adjustable drawer is fitted with a travel limit switch to avoid over extending the drawer, while still allowing a maximum extension of 1'6" from the wall..

Communication

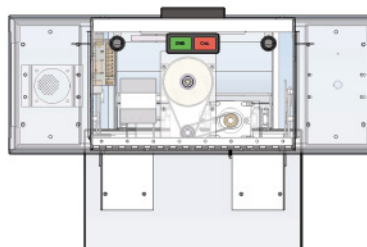
For clear and straight forward communication a speaker and microphone have been built in to the unit. This eliminates the need for additional hardware and wiring. The unit integrates seamlessly with VSI multi-lane audio and video components or on its own.



Rear of deal drawer with manual release crank wheel inserted.

Serviceability

The VSI Deal Drawer is designed for safety, comfort and functionality. It has been put through numerous vigorous tests including ballistics testing and a100k cycle motor test., but part of the design process was to include ease of service. Both the drive system assembly and Inner drawer assembly can be removed/replaced in 15 minutes. The rails and ball bearing slides can be replaced by simply removing 4 bolts each. The drawer arm needs only 2 nuts removed to replace. The speaker and microphone can be accessed from the outside by removing two screws and the send/call buttons have a quick disconnect in one single unit. Lastly, the stainless steel front and trim are all completely replaceable in case of damage or vandalism.



Increases safety by defending against direct physical interaction between the teller and the customer.

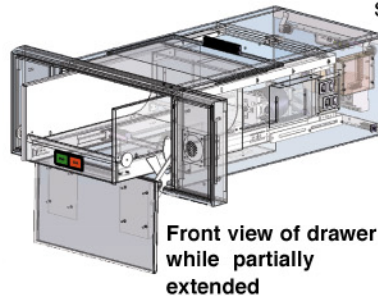
The full-volume drawer is condensed for easy installations, though rugged enough to handle large items as well as common everyday transactions.

Built in microphone and speaker make for easy and clear communications.

Stainless steel finish gives a clean, sleek and stylish look as well as secure appearance.

Specs

From the little things – like a built in clip inside the drawer for holding items in place – to exclusive features like a send button on the tray, and provisions for a Camera and optional LCD monitors, the VSI deal drawer is ideal for transactions on the go. The drawer size is 5 3/4" H X 12" W X 17 1/2" D. The deal drawer capacity is 1208 cu in. The exterior, microphone & speaker grill and drawer front are all clad in stainless steel for sleek and formidable appearance. The interior body is constructed of steel and coated to defend against corrosion as well as everyday wear and tear.



Front view of drawer while partially extended



Vault Structures, Inc
3640 Work Drive
Fort Myers, FL 33916
800 226 3990
sales@vaultstructures.com